

# SIBBESBORG

Competition For Sustainable Community Development



## Sibbesborg: Competition for Sustainable Community Development

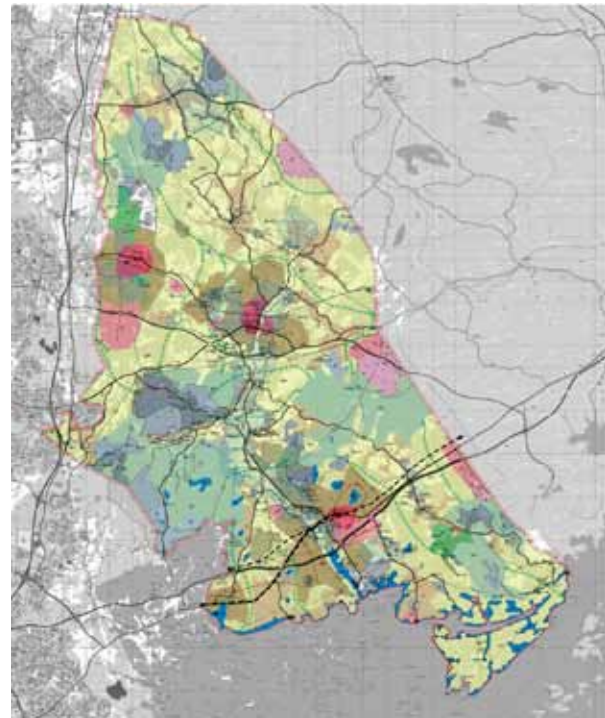
During 2011, the municipality of Sipoo is to host an international competition for sustainable community development, in co-operation with the Aalto University Department of Architecture, the Finnish Association of Architects, RYM Ltd and the OSKE Centre of Expertise. The competition is supported by Tekes, the Finnish Funding Agency for Technology and Innovation, through its sustainable community programme.

Its location next to the Finnish capital provides Sipoo with an excellent opportunity to plan and create new and sustainable urban structures. The competition aims to examine how Söderkulla and the Sipoonlahti areas could be developed in accordance with both locally and globally sustainable objectives, now and in the future. It is hoped that the experience gained through the competition will help to develop new and advanced concepts for future urban areas.

The competition will lead to a practical plan and the means to develop Söderkulla and the Sipoonlahti area into Sibbesborg, a small new town of 70,000-100,000 inhabitants. Land-use targets, values supporting sustainable development within society and local values, will form the basis of the planning. Additionally, a new concept for architectural competitions is to be developed, with the competition entries comprising methods for converting all aspects of sustainable community development into practical solutions.

The competition format will be highly interactive with the public and experts having the possibility to influence the objectives, the agenda and the principles of evaluation from the very beginning. During the planning phase of the competition programme, it will also be studied whether the competition can be utilised to select suitable planning consultants to implement the master plan for the municipality.

An extensive area such as Sibbesborg could, in the long run, function as a living laboratory for urban development. This would fulfill Finland's need to acquire a sustainable community pilot project in order to succeed in global terms. It would, at the same time, be possible to explore new ways of directing urban development, utilizing political and development programmes. Overall, the composition of the competition programme and the evaluation of the practical results could benefit the development of more efficient planning instruments for cities, from the perspective of both work productivity and the sustainability of communities.



Sipoo Master Plan 2025 (preliminary)

### Sibbesborg, Local Features

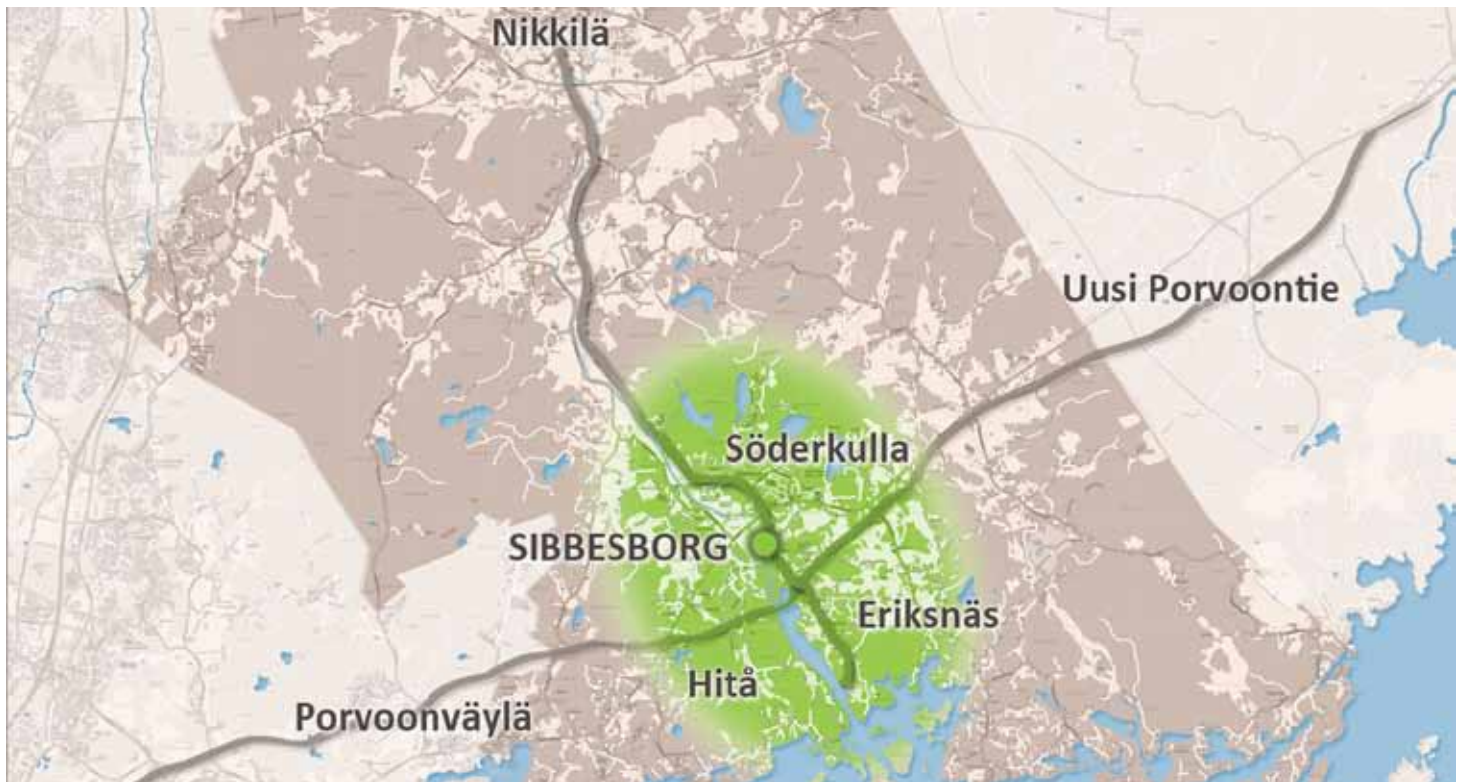
The area featured in the competition is situated approximately 30 kilometres Helsinki. It is bisected by the main transport route, the Porvoonväylä motorway. The possibility of a regional rail network has been mooted for decades, but in-depth investigations into its implementation have only recently been carried out.

The competition area, which covers approximately 26 km<sup>2</sup>, lies on the coast. According to statistics from 2009, just over 3,000 people live in the area, with the highest concentration of population and services in the centre of Söderkulla.

The landscape is dominated by the Sipoo river basin and Sipoonlahti, bringing the element of water right to the heart of the competition area. Typical features of the local landscape are the small rocky areas with their striking details, and several places of natural interest can also be found in the area.

The name Sibbesborg has a long history. A castle was situated on Sibbesborg Island as early as the late 14th century. Since its abandonment, the area has remained virtually unaltered. Over time, the shoreline has receded, and today the area is surrounded by farmland. Because of its history and its location in the centre of the planning area, Sibbesborg has given its name to the competition. The temple of the Finnish epic hero Lemminkäinen is also supposed to lie nearby.

In addition to the centre of Söderkulla, the competition area also includes other developments such as the Erik-snäs Estate which is situated to the east of Sipoonlahti. It is currently undergoing area planning, as part of the Sipoo 2025 Master Plan. Also worth mentioning is Hitå, west of Sipoonlahti, which is to undergo area planning after the competition.



The main part of the land owned by the municipality of Sipoo is situated around Söderkulla, and Sipoo has made land development agreements with several landowners within the competition area.

## The Sipoo 2025 Master Plan and Expansion Strategy

In 2008 the local council approved the 2025 Master Plan covering the whole municipality and based on a strategy of strong expansion, as agreed in 2007. The strategy comprises well-planned and rapid expansion, combined with modernisation and development.

This expansion strategy is Sipoo's response to the Helsinki Region's increasing pressure on land use. With the aid of the 2025 Master Plan, Sipoo aims to direct growth to urban areas, specifically those along the rail transport development corridors. In accordance with the expansion strategy, Sipoo intends to increase its population by 35,000 by 2025, though even greater development is envisioned by the 2025 Master Plan, which also indicates potential development areas, although this would obviously increase the development time.

Area development must be regarded as a whole, thereby facilitating the seamless implementation of individual projects. Söderkulla, an existing urban area, is one of three centres included in the expansion strategy. In order to ensure controlled development of Söderkulla and its surroundings, the area should be studied with regard to its overall potential, although the expansion process itself may well extend over several decades.

## Other Plans And Projects Affecting the Competition Area

The Sibbesborg area has also been included in the "Helsinki-Porvoo kehysuunnitelma (HEPO)", which was compiled in co-operation with the cities of Helsinki, Vantaa, Sipoo and Porvoo, as well as the Regional Councils of Uusimaa and Itä-Uusimaa. The plan indicates alternative areas suitable for urban-type development and sets out common principles. The Suur-Söderkulla/Sibbesborg alternative, for example, proposes a urban-type centre in Söderkulla, and one of the aims of the competition is to investigate this in greater depth.

Sipoo is in co-operation with the organisation which has prepared the strategic objectives for land use, habitation and transport for the Helsinki Region up to 2050 (MAL). These were approved in a regional assembly on 22.4.2010 and are based on the Vision for the Helsinki Region, which was one outcome of the 2008 Greater Helsinki Vision 2050 Competition. The Sibbesborg competition aims to fulfill these strategic objectives.

For additional information on the strategic objectives of the Helsinki region and their implementation, please visit: [www.hel2.fi/Helsinginseutu/Hsyk/MAL\\_linjaukset\\_esite\\_su.pdf](http://www.hel2.fi/Helsinginseutu/Hsyk/MAL_linjaukset_esite_su.pdf)

## Sustainability In Community Development

Sustainability is one of most difficult challenges faced by modern community development. In society, various aspects of sustainable development (ecological, economic, social and cultural) have become a subject of wider discussion, and this is also reflected in planning.

Community development plays an important part in facilitating sustainability. Energy consumption, food production, traffic and transport, the effects of an ageing population, services, commerce and competitiveness are always dependent on city planning solutions, which either support or weaken, prevent or facilitate sustainable results. The practical implementation of visions also poses challenges. Various implementation models have been developed elsewhere, but these should be investigated and tested within a Finnish framework.

Functioning existing structures may be utilised as a basis for new ones; in global terms, Finland's type of architectural competition is highly developed and this could be taken one stage further, to cover the additional needs of society, although this will require extensive co-operation between all interested parties, starting from the planning phase of the competition. Ideally, a competition outcome could benefit everyone, either directly through financial profit, or in the long run, in the shape of a more sustainable society.

There has been an increasing interest in the research and development of sustainable community solutions. Architectural competitions focusing on energy efficiency and sustainable development such as the Jätkäsaari Low2No sustainable development design competition in Helsinki, the new Tourism Village Competition at Ylläs and the Henna InTo – Innovative Town Concept for the Future – Competition in Orimattila have already been carried out in Finland. However, the outcome of these has been either limited to single buildings or city blocks, without delivering solutions suited to entire communities, based on sustainable development, or else the aim has been to produce ideas or concepts, rather than practical solutions. The Sibbesborg competition, comprising a relatively undeveloped area located next to a metropolis, offers a great opportunity for the research and development of sustainable community solutions leading from vision to implementation on a city scale.

## Competition Timetable

### Initiation of Project 6/2010

Preliminary Estimate of Cost 350,000 €

### Planning of Competition Structure, ongoing

21.10.2010 Press Conference

21.10.2010 Activation of [www.sibbesborg.net](http://www.sibbesborg.net)

### Workshops 10/2010

25.10.2010: Creation of a Vision for the Sibbesborg Sustainable Community

27.10.2010: Structure of the Competition

28.10.2010: Sibbesborg: Competition for Sustainable Community 2011

The workshops will be held in order to facilitate the creation of a new concept for the competition agenda. Experts from various fields will be taking part in the workshops which will begin at 12:00 and last for about 5 hours. These can be accessed via the website [www.sibbesborg.net](http://www.sibbesborg.net) in order that the public can observe, and input their views, thereby helping to define the future of Sibbesborg and the competition on sustainable community.

**The competition will open in February/March 2011**

**The competition will be decided by the end of 2011**

## Additional information

### Development Manager Mikko Aho

[mikko.aho@sipoo.fi](mailto:mikko.aho@sipoo.fi) , tel. +358-9- 2353 6700.

### Area Development Architect Sirkku Huisko

[sirkku.huisko@sipoo.fi](mailto:sirkku.huisko@sipoo.fi), tel. +358-9- 2353 6702